

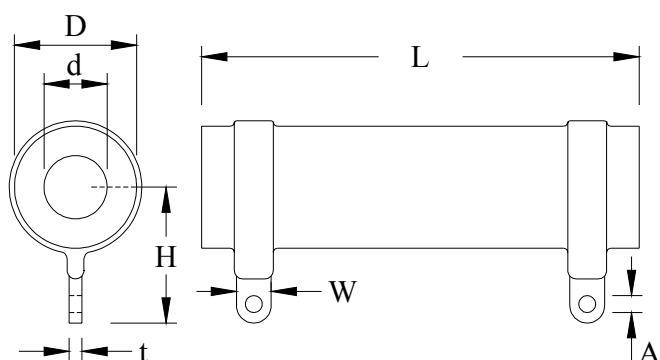
FEATURES

- * WATTAGES FROM 5 WATTS TO 200 WATTS
- * RADIAL TERMINATION LUG & QUICK CONNECT
- * ALL WELDED CONSTRUCTION
- * HIGH VOLTAGE CAPABILITY
- * NON FLAMMABLE, NO FUMES

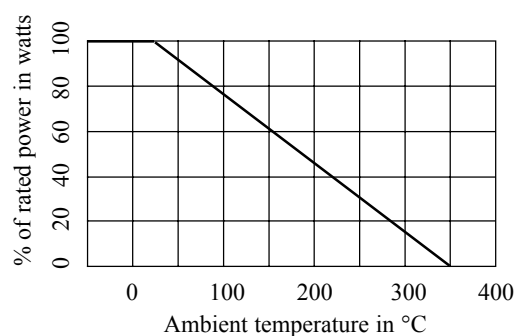
CHARACTERISTICS

Power dissipation	Rated at 25°C ambient and derate linearly to zero power at 350°C
Temperature coefficient	±200 PPM/°C.
Overload	10 times full load for 5 seconds

DIMENSIONS(mm)



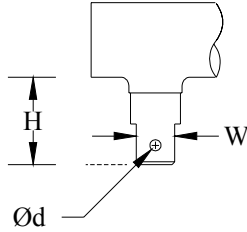
DERATING CURVE



TECHNICAL SPECIFICATIONS

Type	Watts at 25°C	Ohmic range		Ceramic tube dimensions(mm)			Terminal Dimensions(mm)		
		Min	Max	L±3.0	D±1.0	d±1.0	W±0.2	H±2.0	A±0.1
VPRV5	5W	0R33	100R	25	8	4.5	4	12	2.2
VPRV10	10W	1R0	270R	45	8	4.5	4	12	2.2
VPRV25	25W	1R8	560R	50	13	7.5	4	15	2.2
VPRV50	50W	4R7	1K5	100	16	9.5	4	23	2.2
VPRV100	100W	8R2	2K7	100	30	19.5	8	30	4.2
VPRV150	150W	15R	4K7	150	30	19.5	8	30	4.2
VPRV200	200W	18R	6K2	200	30	19.5	8	30	4.2

CONNECTOR TYPE
TERMINATION

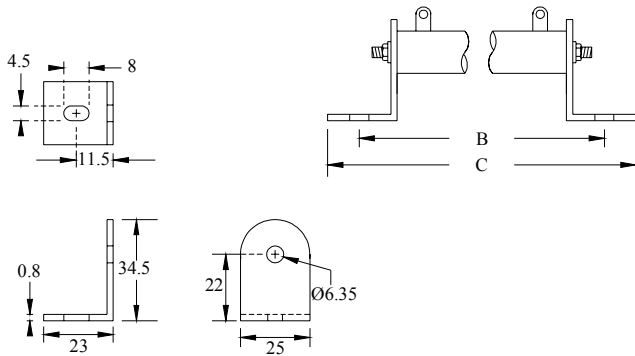


DIMENSIONS(mm)

TYPE	H	W	d
VPRV5	11	4.7	2.2
VPRV10	11	4.7	2.2
VPRV25	11	4.7	2.2
VPRV50	11	4.7	2.2
VPRV100	15	8	4.2
VPRV150	15	8	4.2
VPRV200	15	8	4.2

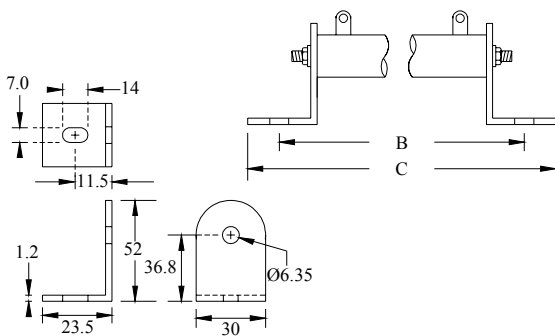
MOUNTING ARRANGEMENTS(mm)

TYPE-1



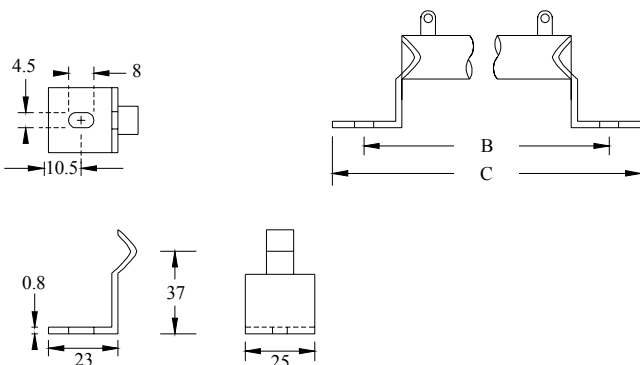
TYPE	B	C
VPRV5	---	---
VPRV10	---	---
VPRV25	73	96
VPRV50	123	146

TYPE-2



TYPE	B	C
VPRV100	123	146
VPRV150	175	198
VPRV200	225	248

TYPE-3



TYPE	B	C
VPRV25	73	96
VPRV50	123	146
VPRV100	123	146
VPRV150	175	198
VPRV200	225	248