

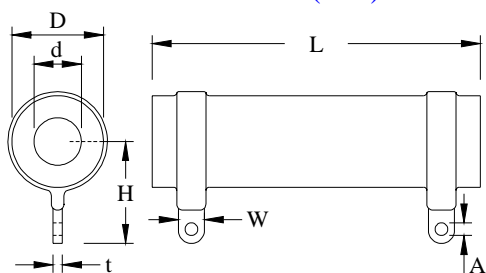
FEATURES

- * WATTAGES FROM 10 WATTS TO 1250 WATTS
- * RANGE FROM 0.01 OHM TO 100 K OHM
- * ALL WELDED CONSTRUCTION
- * SILICONE/FLAME RETARDANT COATED
- * STANDARD/LOW INDUCTIVE
- * ANY SPECIAL DESIGN ON REQUEST

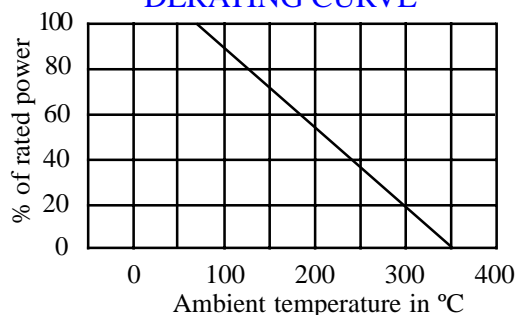
CHARACTERISTICS

Tolerance	$\pm 1\%$, $\pm 2\%$, $\pm 5\%$, $\pm 10\%$ (Low tolerances available)
Temperature coefficient	$\pm 200\text{PPM}/^\circ\text{C}$ (Low PPM available)
Power dissipation	Rated at 70°C and derate linearly to 0 power at an ambient of 350°C
Load life stability	$\pm 5\%$ (after full load dissipation for 1000 hours)
RCWV	$\sqrt{\text{Rated power} \times \text{resistance value}}$ (RCWV - Rated Continuous Working Voltage)

DIMENSIONS(mm)



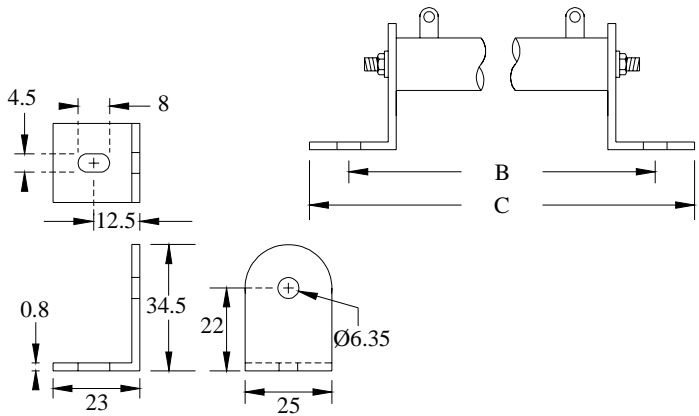
DERATING CURVE



TECHNICAL SPECIFICATIONS

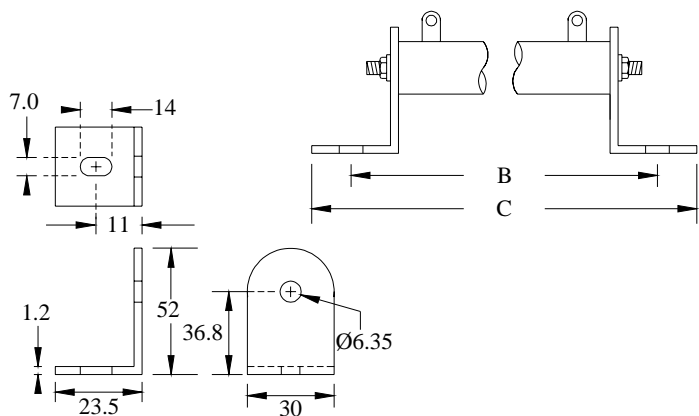
Type	Watts at 70°C	Ohmic range min	Ohmic range max	L ± 3	D ± 1	d ± 1	H ± 0.5	W ± 0.2	t ± 0.2	A ± 0.1
VPR10	10	0R01	2K4	27	15.0	7.5	15	4	0.7	2.2
VPR20	20	0R01	10K	50	15.0	7.5	15	4	0.7	2.2
VPR25	25	0R01	18K	78	15.0	7.5	15	4	0.7	2.2
VPR30	30	0R01	18K	75	19.0	9.5	23	4	0.7	2.2
VPR40	40	0R01	24K	100	19.0	9.5	23	4	0.7	2.2
VPR50	50	0R01	39K	100	23.0	14.5	26	6	0.7	3.2
VPR60	60	0R01	47K	120	23.0	14.5	26	6	0.7	3.2
VPR75	75	10R	75K	100	33.0	19.5	30	8	1.4	4.2
VPR100	100	15R	91K	150	33.0	19.5	30	8	1.4	4.2
VPR150	150	20R	150K	200	33.0	19.5	30	8	1.4	4.2
VPR200	200	30R	180K	250	33.0	19.5	30	8	1.4	4.2
VPR250	250	33R	100K	305	36.0	25.0	30	12.7	1.4	4.2
VPR300	300	33R	100K	250	53.0	35.0	47	12.7	1.4	6.0
VPR400	400	33R	100K	305	43.0	25.0	47	12.7	1.4	6.0
VPR500	500	33R	100K	325	53.0	35.0	47	12.7	1.4	6.0
VPR750	750	33R	100K	375	53.0	35.0	47	12.7	1.4	6.0
VPR1000	1000	33R	100K	450	53.0	35.0	47	12.7	1.4	6.0
VPR1250	1250	47R	100K	540	63.0	45.0	70	12.7	1.4	6.0

MOUNTING ARRANGEMENTS

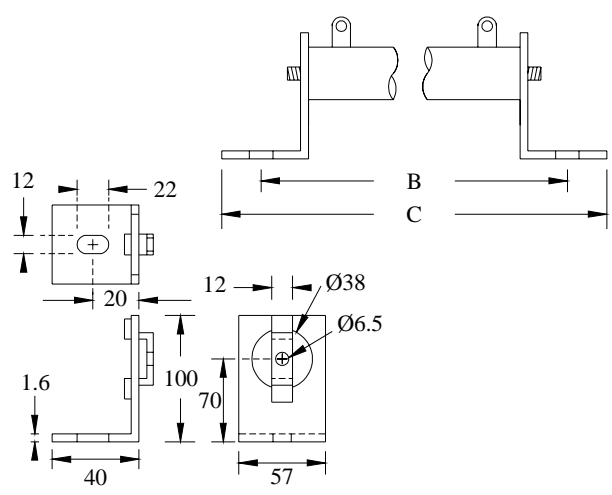


DIMENSIONS(mm)		
Type no.	B	C
VPR10	50	73
VPR20	73	96
VPR25	98	121
VPR30	98	121
VPR40	123	146
VPR50	123	146
VPR60	143	166

Mounting accessories
 Material : M.S
 Passination : Zinc yellow/white



Type no.	B	C
VPR75	125	150
VPR100	175	200
VPR150	225	250
VPR200	275	300
VPR250	330	355



Type no.	B	C
VPR300	290	330
VPR400	345	385
VPR500	365	405
VPR750	415	455
VPR1000	490	530
VPR1250	580	620