



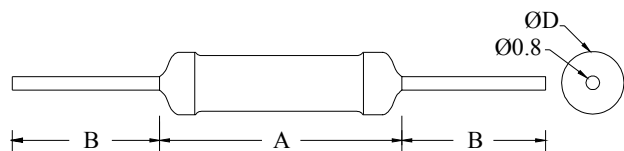
FEATURES

- * WATTAGES FROM 0.5 WATT TO 15 WATTS
- * RANGE FROM 0.01Ω TO 120KΩ
- * SILICONE/FLAME RETARDANT COATED
- * NON INDUCTIVE ARYTON- PERRY WINDING TYPE AVAILABLE
- * ANY SPECIAL DESIGN ON REQUEST
- * HIGH VOLTAGE PULSE RESISTORS AVAILABLE
- * ALL WELDED CONSTRUCTION

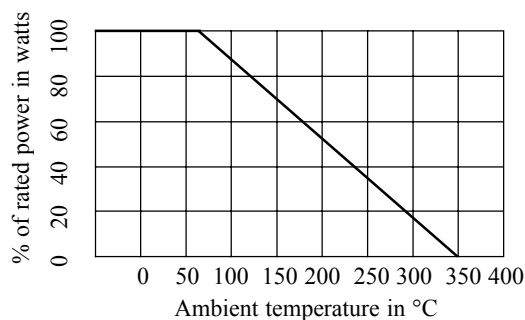
CHARACTERISTICS

Tolerance	±5% ± 10%. Low tolerances on request
Temperature coefficient	±200 PPM/°C. Low TCR available
Power dissipation	Rated at 70°C ambient and derate linearly to zero power at 350°C
Load life stability	±5% (after full load dissipation for 1000 hrs)
Maximum voltage	\sqrt{PR} Where P is power in watts and R is resistance in Ω

DIMENSIONS(mm)



DERATING CURVE



TECHNICAL SPECIFICATIONS

Type	Wattage at 70°C	Ohmic range		OD±1.0	Dimensions(mm)		
		Min	Max		A±1.0	B±2.0	Od±0.1
VPA 0.5	0.5 W	0R1	10R	2.5	7.0	25.0	0.5
VPA 1	1.0 W	0R01	3K3	4.0	13.0	35.0	0.8
VPA 2	2.0 W	0R01	4K7	5.0	15.0	33.0	0.8
VPA 2.5	2.5 W	0R01	10 K	5.5	15.0	33.0	0.8
VPA 3	3.0 W	0R01	10 K	6.0	20.0	30.0	0.8
VPA 4	4.0 W	0R01	10 K	6.5	20.0	30.0	0.8
VPA 5	5.0 W	0R01	18 K	7.0	25.0	28.0	0.8
VPA 6	6.0 W	0R01	20 K	8.0	25.0	28.0	0.8
VPA 7	7.0 W	0R01	39 K	7.0	38.0	30.0	0.8
VPA 9/10	9.0 W	0R01	68 K	8.0	40.0	30.0	0.8
VPA 12	12.0 W	0R01	100 K	8.0	55.0	30.0	0.8
VPA 15	15.0 W	0R01	120 K	8.0	70.0	30.0	0.8