

## FEATURES

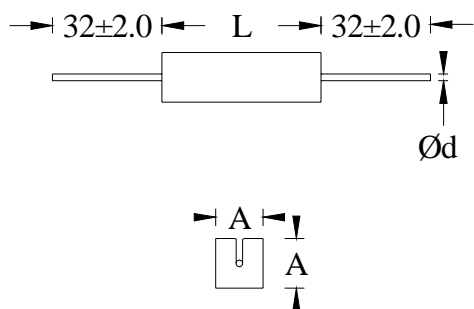
- \* WATTAGES FROM 2 WATTS TO 40 WATTS
- \* RANGE FROM 0R1 OHM TO 33K OHMS
- \* ALL WELDED CONSTRUCTION
- \* CERAMIC ENCASED, AXIAL LEADS
- \* ANY SPECIAL DESIGN ON REQUEST



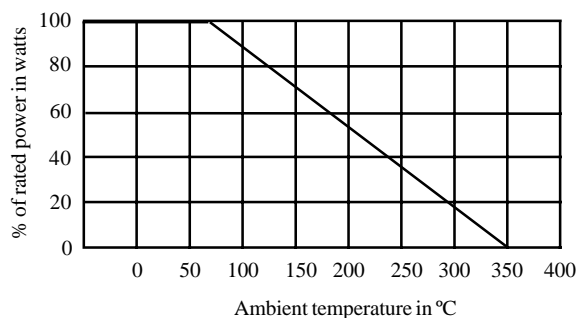
## CHARACTERISTICS

Tolerance	±5% & ±10% (closure tolerances available on request)
Temperature coefficient	±200PPM/°C
Power dissipation	Rated at 70°C ambient and derate linearly to 0 power at 350°C
Load life stability	±5% (After full load dissipation for 1000 hrs.)
RCWV	$\sqrt{\text{Rated power} \times \text{resistance value}}$ (RCWV - Rated Continuous Working Voltage)

## DIMENSIONS(mm)



## DERATING CURVE



## TECHNICAL SPECIFICATIONS

Type no.	Watts at 70°C.	Ohmic range		Mechanical dimensions(mm)		
		Min	Max	A±1.0	L±2.0	d±0.05
VBMAL2	2	0R1	3K3	7.0	17.0	0.8
VBMAL3/4	3	0R1	6K8	8.0	22.0	0.8
VBMAL5	5	0R1	8K2	9.0	22.0	0.8
VBMAL7	7	0R1	10K	9.0	35.0	0.8
VBMAL10	10	0R1	15K	9.0	48.0	0.8
VBMAL15	15	0R1	22K	13.0	48.0	1.0
VBMAL20	20	1R	27K	13.0	63.0	1.0
VBMAL25	25	1R	33K	16.0	63.0	1.2
VBMAL30	30	1R	33K	16.0	75.0	1.2
VBMAL40	40	1R	33K	16.0	84.0	1.2